

Block & Precast Concrete Products

High Performance Manufacturing
Solutions



Block & Precast Concrete Products Manufacturers

Grow your business with **RediMAX™** CERATECH's revolutionary, ultra-high performance, engineered **“green”** cement technology!

Competitive advantages never before possible are now a reality!



- **“Just In Time” manufacturing** - Minimize inventory costs by **producing and shipping orders same day!**
- **Dramatically Increase Manufacturing Efficiencies** - Cast / De-mold & Transport in as little as **3 hours!**
- **Self Curing** - Steam curing processes not required
- **Increase Design Efficiency** - Increased strengths allow for thinner precast wall profiles & lower weight products
- **Offer High Performance “GREEN” Products** - capitalize on growing demand for **green** building products!
- **Offer an Ultra High Strength Masonry Construction System** - Enable block customers to build faster and higher with the **FORTRESS™** Brand , Block, Mortar & Grout System
- **Utilize Post Consumer & Industrial Waste** - Help your customers earn valuable **“GREEN”** building credits
- **Customize Mix Designs** - Build product to specification!



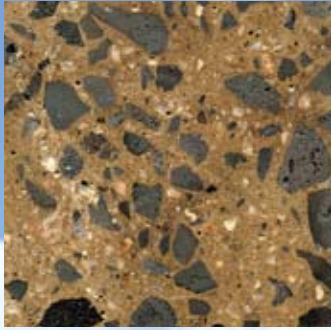
! Manufacture CMUs in excess of 10,000 psi



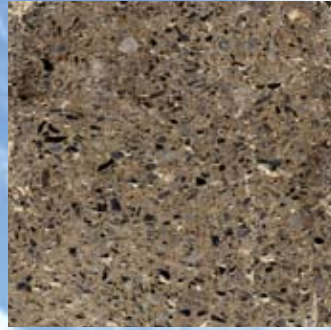
RediMax™

CERATECH designs, manufactures and supplies highly engineered “**green sustainable**” engineered cements that can be used in a wide variety of block & precast product manufacturing. **CERATECH's revolutionary new green material technology** enables **RAPID manufacturing of high performance, precast & block products.**

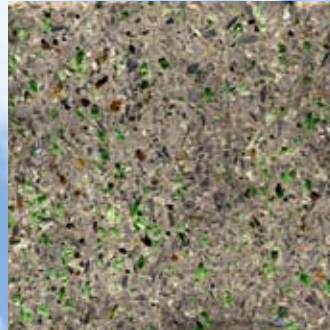
RediMax™ is a versatile, water activated, high performance structural cement. **RediMax™** can be effectively placed in ambient temperatures ranging from 30 to 120 degrees Fahrenheit **without the need for traditional post hydration curing practices.** **RediMax™** cements are comprised of nearly 95% waste stream material. When extended with other post consumer or industrial waste such as glass, **RediMax™** achieves a level of “**green**” friendliness **like no other construction material in the world!** Exceptional mix design flexibility allows for **custom tailored formulations per customer requirements.**



RediMax™ cement extended with typical 3/8” aggregate



RediMax™ cement extended with typical fine aggregate screedings



RediMax™ cement extended with typical fine aggregate screedings and 33% recycled glass

Product Benefits

- **Non-shrink**
- **Exceptionally low permeability -** Highly resistant to sulfate, chloride and chemical attack
- **Exceptional durability -** Highly resistant to freeze thaw cycles, scaling & abrasion
- **Self-Curing -** Does not require moist curing, tenting in cold applications or cooling in high temperatures.
- **Superior Fire Resistance -** 50% greater fire rating than traditional CMUs
- **Non-hazardous -** Green sustainable material!
- **Can be placed in ambient temperatures ranging from 30°F to 120°F -** Without degradation to long term performance characteristics

Visit www.ceratechinc.com for up to the minute product information, case studies and product videos.

Call 1-800-581-8397 for sales east of the Mississippi

Call 1-800-708-7963 for sales west of the Mississippi

RediMAX™

ASTM
Test
Method

Compressive Strengths psi			
4 hours	2200	○	C39
24 Hours	4340	○	C39
7 days	7360	○	C39
28 days	9370	○	C39
Flexural Strengths psi			
7 days	712	○	C78
28 days	950	○	C78
Tensile Strengths psi			
28 days	750	○	C496
Scaling Resistance lbs/ft ²			
50 Cycles	0	○	C672
Modulus Of Elasticity			
28 days	5.00	○	C469
Coefficient of Thermal Expansion millionth / F			
28 days	4.7	○	(AASHTO) TP-60
Length Change, % of Total length 28 days air cure			
28 days	-0.0100	○	C157
Rapid Freeze Thaw Resistance (Durability Factor - Retained Percentage of Dynamic Modulus)			
300 Cycles	100%	○	C666A
Set Times @72°F/22°C			
Initial (Working Time)	45 - 60 min.	○	
Final	90 min.	○	

© 2008 CERATECH Inc

○ Test Results developed by internal CTI testing

Performance data Based on 750Lb. of Binder Per Cubic Yard of Concrete @ 72°F

* Actual strengths are dependant upon mix design

* Refer To CERATECH Product Data Sheets For Up To Date Performance Data

High Performance, Precast Concrete Repair Products:



jetrok™
SPRAYABLE HI-STRENGTH MORTAR

High Strength, Rapid Cure One Part Shotcrete Mortar

CERATECH's single component cement binder technology provides for a high strength mortar that can be sprayed onto most porous surfaces to create a **highly durable repair**. Jetrok™ has 30 minutes of potlife and **will reach compressive strengths over 3,000 psi in under 4 hours with exceptional adhesion to reinforcing steel.**



Pre Cast Concrete RAPID Repair Mortar

- 15 - 30 minutes working time @ 72°F
- Applicable from 40°F /4°C to 100°F /37°C
- 17 lb. (7.7 kg) 2 Gallon / 7.6L Bucket
- Yield (Coverage)
 - @ 0.25" profile = 7.4 ft²
 - @ 0.50" profile = 3.7 ft²
 - @ 1.00" profile = 1.9 ft²
 - @ 4.00" profile = 0.48 ft²
- Can be returned to a gel state by re-mixing with drill and paddle
- 3 hour compressive strengths greater than 2,700 psi

